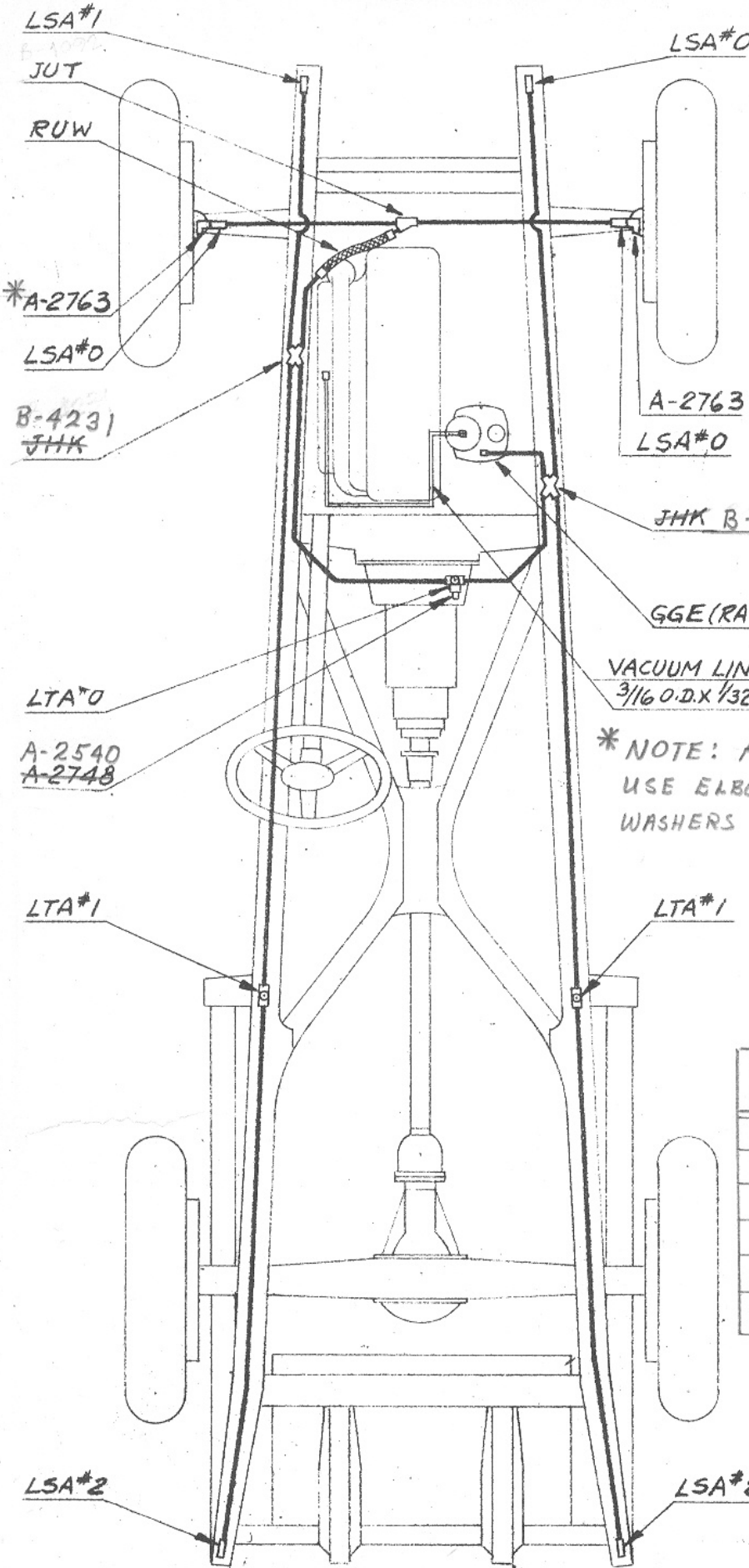


AUBURN 8-100

FOR FIRST SERIES OF CARS SEE Z-3207

PLACES LUBRICATED



SPRING HINGE BOLTS 3

F.A. STEERING KNUCKLE UPPER & LOWER BEARING-STEERING 6
KNUCKLE THRUST BEARING

CLUTCH RELEASE BEARING 1

REAR SPRING HINGE 2

REAR SPRING SHACKLE 4

TOTAL 16

* NOTE: A-2763 NO LONGER AVAILABLE. USE ELBOW CONN. A-2768 & 3 OR 4 WASHERS A-4141.

ORIGINAL DRIP PLUG	REPLACEMENT METER UNIT	QUANT.
LSA-0	CSA-0	3
LSA-1	CSA-1	1
LSA-2	CSA-2	2
LTA-0	GTA-0	1
LTA-1	GTA-1	2

ALL TUBING 3/32 O.D. X .025 WALL ANNEALED COPPER UNLESS OTHERWISE SPECIFIED.